

Editorial

The AALAS Journals: 2012 in Review

Linda A Toth, Susan R Compton, and Ravi J Tolwani

The November issue of *JAALAS* volume 51 and the December issue of *Comparative Medicine (CM)* volume 62 mark the end of another year for the AALAS journals. Our sincere thanks go again to the talented support the journals receive from art

director Amy Tippet and scientific editor Amy Frazier, as well as to the AALAS staff, Melissa Bagaglio and John Farrar. This team together continues to sustain a timely flow of well-edited and professionally-presented information through the entire

Table 1. Journal statistics

<i>JAALAS</i>	2006	2007	2008	2009	2010	2011	2012
Total submissions	68	119	132	172	167	191	170
International	24	31	52	61	52	71	57
% international	35	26	39	35	31	37	34
Disposition							
Referred to <i>CM</i>	3	4	11	15	18	31	16
Withdrawn	3	7	6	4	8	5	5
Rejected	24	37	35	41	43	55	64
Accepted	41	61	73	93	91	90	75
Total accepted or rejected in 2012*	65	98	108	134	134	145	139
% accepted	63	62	68	69	68	62	54
Time from submission to							
first decision (days)	28	32	28	28	28	28	28
acceptance (days)	50	55	66	64	62	62	50
Articles published**	62	65	62	68	90	96	79
Pages published, articles	812	756	732	840	916	993	872
Average pages per article	6.9	6.3	5.7	5.9	5.8	6.4	6.8
Pages published, meeting abstracts	62	64	117	119	108	114	114
Impact factor		0.52	0.53	0.95	0.80	0.71	***
<i>CM</i>	2006	2007	2008	2009	2010	2011	2012
Total submissions	83	136	126	158	138	162	171
International	35	42	50	86	55	73	76
% international	42	31	40	54	40	45	44
Disposition							
Referred to <i>JAALAS</i>	18	27	24	39	36	31	29
Withdrawn	1	7	8	6	6	4	3
Rejected	20	34	37	51	35	54	75
Accepted	44	57	56	47	61	57	64
Total accepted or rejected in 2012*	64	91	93	98	96	111	139
% accepted	69	63	60	48	64	51	46
Time from submission to							
first decision (days)	49	40	32	28	28	28	24
acceptance (days)	95	66	62	53	61	53	46
Articles published**	45	63	63	59	55	60	68
Pages published, articles	452	614	623	613	520	576	568
Average pages per article	7	7.2	7.4	7.7	6.9	7.05	6.7
Pages published, meeting abstracts	–	–	–	–	12	12	6
Impact factor	0.99	1.15	1.09	1.09	1.20	1.05	***

*, some articles submitted in 2012 are still under review

***, some of the articles published in 2012 were accepted in 2013

***, information not yet available for 2012

Table 2. Species focus of articles published in *JAALAS* and *CM*

Species	<i>JAALAS</i>				Species	<i>CM</i>			
	2009	2010	2011	2012		2009	2010	2011	2012
Mice	18	27	23	35	Mice	21	14	20	19
NHP	10	21	22	16	NHP	9	11	16	23
Rats	14	11	10	7	Rats	9	10	9	6
Rabbits	4	3	4	0	Rabbits	4	2	2	5
Swine	3	2	6	2	Swine	4	5	5	8
Other	17	18	20	9	Other	12	10	4	7
None	3	7	7	11					

process from manuscript submission to publication.

Perhaps the highlight of the year was the May special topic issue on “Regulatory Updates in Animal Research,” published in *JAALAS* and assembled under the leadership of guest editor Mary Jo Shepherd. We continue to seek special focus issues for both journals and invite anyone interested in volunteering to serve as a guest editor for a specific special topic issue of either journal to contact one of us to discuss the idea.

An exciting change has been implementation of “Epub ahead of print” in both journals. This means that the articles accepted in the journal will now be available ahead of print on the journal website. This new system accelerates the exchange of scholarly information by making content available before is published in

the traditional journal version. This advance in our publication capabilities gives readers immediate access to accepted work and will benefit authors in allowing their work to be made public and cited at the earliest possible date.

The publication statistics for the journals remain strong, with numbers for most measures moving in a positive direction or remaining constant. The increase and decrease, respectively, in the number of articles submitted to *CM* and *JAALAS* likely reflects the assignment of clinical case reports to *CM* rather than to *JAALAS*. This change has had the intended effect of balancing the number of submissions to the 2 journals. Thus, the change has alleviated past problems due to too much content for *JAALAS*, which resulted in lengthy intervals between

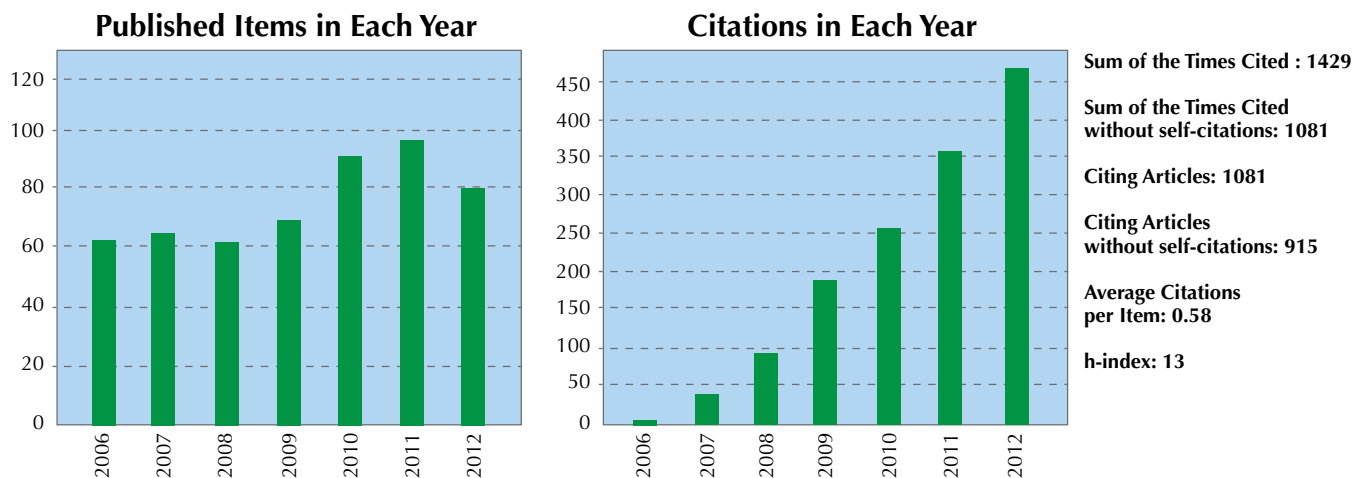


Figure 1. Citation reports for the *Journal of the American Association for Laboratory Animal Science*.

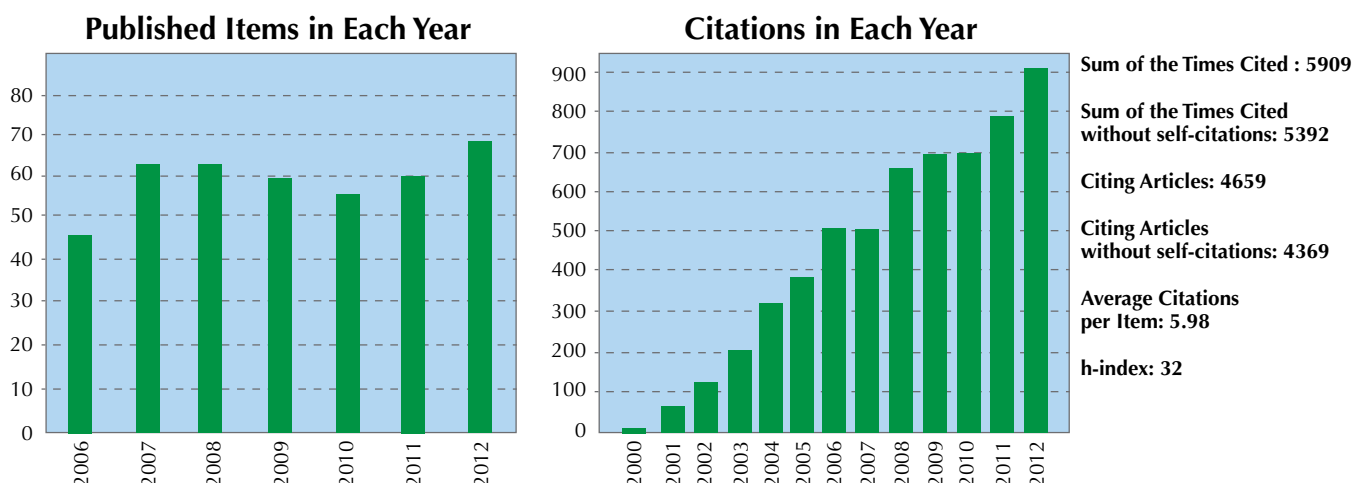


Figure 2. Citation reports for *Comparative Medicine*.

manuscript acceptance and publication, and inadequate content for *CM*, which resulted in unacceptably small issues. In 2012, consistent with 2011, approximately 34% and 44% of the articles submitted to *JAALAS* and *CM*, respectively, came from authors and institutions outside the US, representing 19 countries for *JAALAS* and 21 for *CM*. As part of our outreach activities to

affiliated organizations, in 2012 we published AISAL's (Associazione Italiana per le Scienze degli Animali da Laboratorio) abstracts in *CM* and *AALAS* and APV (Association of Primate Veterinarians) in *JAALAS*.

In 2012, the overall acceptance rates fell for both journals and are now approximately 54% for *JAALAS* and 46% for *CM*. These

Top 10 cited articles in *Comparative Medicine**

Article	Publication year	Number of times cited
Mansfield K. 2003. Marmoset models commonly used in biomedical research. <i>Comp Med</i> 53 :383–392.	2003	76
Abbott DH, Barnett DK, Colman RJ, Yamamoto ME, Schultz-Darken NJ. 2003. Aspects of common marmoset basic biology and life history important for biomedical research. <i>Comp Med</i> 53 :339–350.	2003	62
Dyson MC, Alloosh M, Vuchetich JP, Mokelke EA, Sturek M. 2006. Components of metabolic syndrome and coronary artery disease in female Ossabaw swine fed excess atherogenic diet. <i>Comp Med</i> 56 :35–45.	2006	60
Parker JM, Mikaelian I, Hahn N, Diggs HE. 2002. Clinical diagnosis and treatment of epidermal chytrid-omycosis in African clawed frogs (<i>Xenopus tropicalis</i>). <i>Comp Med</i> 52 :265–268.	2002	59
Hsu CC, Riley LK, Wills HM, Livingston RS. 2006. Persistent infection with and serologic cross-reactivity of three novel murine noroviruses. <i>Comp Med</i> 56 :247–251.	2006	54
Garner JP, Weisker SM, Dufour B, Mench JA. 2004. Barbering (fur and whisker trimming) by laboratory mice as a model of human trichotillomania and obsessive-compulsive spectrum disorders. <i>Comp Med</i> 54 :216–224.	2004	54
Whary MT, Fox JG. 2004. Natural and experimental <i>Helicobacter</i> infections. <i>Comp Med</i> 54 :128–158.	2004	50
Kobaek-Larsen M, Thorup I, Diederichsen A, Fenger C, Hoitinga MR. 2000. Review of colorectal cancer and its metastases in rodent models: comparative aspects with those in humans. <i>Comp Med</i> 50 :16–26.	2000	50
Arras M, Autenried P, Rettich A, Spaeni D, Rüllicke T. 2001. Optimization of intraperitoneal injection anesthesia in mice: drugs, dosages, adverse effects, and anesthesia depth. <i>Comp Med</i> 51 :443–456.	2001	49
Besselsen DG, Wagner AM, Loganbill JK. 2000. Effect of mouse strain and age on detection of mouse parvovirus 1 by use of serologic testing and polymerase chain reaction analysis. <i>Comp Med</i> 50 :498–502.	2000	47

*Data collected from Web of Knowledge on 18 February 2013.

Top 10 cited articles in the *Journal of the American Association for Laboratory Animal Science**

Article	Publication year	Number of times cited
Portfors CV. 2007. Types and functions of ultrasonic vocalizations in laboratory rats and mice. <i>J Am Assoc Lab Anim Sci</i> 46 :28–34.	2007	76
Perdue KA, Green KY, Copeland M, Barron E, Mandel M, Faucette LJ, Williams EM, Sosnovtsev SV, Elkins WR, Ward JM. 2007. Naturally occurring murine norovirus infection in a large research institution. <i>J Am Assoc Lab Anim Sci</i> 46 :39–45.	2007	21
Kastenmayer RJ, Fain MA, Perdue KA. 2006. A retrospective study of idiopathic ulcerative dermatitis in mice with a C57BL/6 background. <i>J Am Assoc Lab Anim Sci</i> 45 :8–12.	2006	18
Abatan OI, Welch KB, Nemzek JA. 2008. Evaluation of saphenous venipuncture and modified tail-clip blood collection in mice. <i>J Am Assoc Lab Anim Sci</i> 47 :8–15.	2008	17
Hayward R, Hydock DS. 2007. Doxorubicin cardiotoxicity in the rat: an in vivo characterization. <i>J Am Assoc Lab Anim Sci</i> 46 :20–32.	2007	15
Saha DC, Saha AC, Malik G, Astiz ME, Rackow EC. 2007. Comparison of cardiovascular effects of tiletamine-zolazepam, pentobarbital, and ketamine-xylazine in male rats. <i>J Am Assoc Lab Anim Sci</i> 46 :74–80.	2007	15
ACLAM Task Force Members, Kohn DE, Martin TE, Foley PL, Morris TH, Swindle MM, Vogler GA, Wixson SK. 2007. Public statement: guidelines for the assessment and management of pain in rodents and rabbits. <i>J Am Assoc Lab Anim Sci</i> 46 :97–108.	2007	15
Coleman K, Pranger L, Maier A, Lambeth SP, Perlman JE, Thiele E, Schapiro SJ. 2008. Training rhesus macaques for venipuncture using positive reinforcement techniques: a comparison with chimpanzees. <i>J Am Assoc Lab Anim Sci</i> 47 :37–41.	2008	14
Xanthos T, Bassiakou E, Koudouna E, Tsirikos-Karapanos N, Lelovas P, Papadimitriou D, Dontas I, Papadimitriou L. 2007. Baseline hemodynamics in anesthetized landrace-large white swine: reference values for research in cardiac arrest and cardiopulmonary resuscitation models. <i>J Am Assoc Lab Anim Sci</i> 46 :21–25.	2007	14
Probst RJ, Lim JM, Bird DN, Pole GL, Sato AK, Claybaugh JR. 2006. Gender differences in the blood volume of conscious Sprague-Dawley rats. <i>J Am Assoc Lab Anim Sci</i> 45 :49–52.	2006	14

*Data collected from Web of Knowledge on 18 February 2013.

percentages are consistent with obtaining an adequate amount of high-quality content for each issue. We continue to anticipate that over time, rising standards for publication and the more focused scope of each journal will increase the appeal of the journals to scientists, with a resultant increase in the numbers of quality submissions. Prospective authors should be cognizant of the higher standards that are developing, as these will further drop acceptance rates. For example, manuscripts that contain relatively little data (only one table or figure) will be viewed as less desirable than articles that present a substantive and comprehensive investigation of a research question.

The 2 journals remain similar in terms of the time required for review of submitted manuscripts, with 4 wk on average from submission to the first decision, and an additional month

for final acceptance of manuscripts with satisfactory revisions. The distribution of species as topics of manuscripts also remains comparable with past years.

A recent change in the journals is that abstracts can now include 300 words, as opposed to the previous limit of 250 words. Also a result of discussion at the Editorial Review Board meeting in November, we are investigating the development of a tablet version of the journals that would allow subscribers to opt for either a printed or a downloaded version of each issue.

As always, we welcome your suggestions for improvements in the journals and encourage you to give us your opinions, perspective, concerns and suggestions. You have our continued thanks for your support in the development and growth of the journals.

Top 10 Downloaded Articles from PubMed Central in *Comparative Medicine* in 2012

Article Info	Live in PMC	Total Requests
Novak MA, Meyer JS. 2009. Alopecia: possible causes and treatments, particularly in captive nonhuman primates. <i>Comp Med</i> 59 :18–26.	8/1/2009	7936
Lelovas PP, Xanthos TT, Thoma SE, Lyritis GP, Dontas IA. 2008. The laboratory rat as an animal model for osteoporosis research. <i>Comp Med</i> 58 :424–430.	7/17/2009	3286
Cray C, Zaia J, Altman NH. 2009. Acute phase response in animals: a review. <i>Comp Med</i> 59 :517–526.	6/1/2010	2896
Elmore D, Eberle R. 2008. Monkey B virus (<i>Cercopithecine herpesvirus 1</i>). <i>Comp Med</i> 58 :11–21.	7/17/2009	2082
Graham MJ, Janecek JL, Kittredge JA, Hering BJ, Schuurman HJ. 2011. The streptozotocin-induced diabetic nude mouse model: differences between animals from different sources. <i>Comp Med</i> 61 :356–360.	2/1/2012	1913
Casals JB, Pieri NCG, Feitosa MLT, Ercolin ACM, Roballo KCS, Barreto RSN, Bressan FF, Martins DS, Miglino MA, Ambrosio CE. 2011. The use of animal models for stroke research: a review. <i>Comp Med</i> 61 :305–313.	2/1/2012	1906
Padilla-Carlin DJ, McMurray DN, Hickey AJ. 2008. The guinea pig as a model of infectious diseases. <i>Comp Med</i> 58 :324–340.	7/17/2009	1869
Lynch WJ, Nicholson KL, Dance ME, Morgan RW, Foley PL. 2010. Animal models of substance abuse and addiction: implications for science, animal welfare, and society. <i>Comp Med</i> 60 :177–188.	12/1/2010	1785
Bagi CM, Berryman E, Moalli MR. 2011. Comparative bone anatomy of commonly used laboratory animals: implications for drug discovery. <i>Comp Med</i> 61 :76–85.	8/1/2011	1349
Pacharinsak C, Beitz A. 2008. Animal models of cancer pain. <i>Comp Med</i> 58 :220–233.	7/17/2009	1333

Top 10 Downloaded Articles from PubMed Central in *Journal of the American Association for Laboratory Animal Science* in 2012

Article Info	Live in PMC	Total Requests
Duran-Struuck R, Dysko RC. 2009. Principles of bone marrow transplantation (BMT): providing optimal veterinary and husbandry care to irradiated mice in BMT studies. <i>J Am Assoc Lab Anim Sci</i> 48 :11–22.	7/1/2009	7570
Turner PV, Brabb T, Pekow C, Vasbinder MA. 2011. Administration of substances to laboratory animals: routes of administration and factors to consider. <i>J Am Assoc Lab Anim Sci</i> 50 :600–613.	3/1/2012	6650
Fernandez I, Pea A, Del Teso N, Prez V, Rodriguez-Cuesta J. 2010. Clinical biochemistry parameters in C57BL/6J mice after blood collection from the submandibular vein and retroorbital plexus. <i>J Am Assoc Lab Anim Sci</i> 49 :202–206.	9/1/2010	3001
McKeon GP, Pacharinsak C, Long CT, Howard AM, Jampachaisri K, Yeomans DC, Felt SA. 2011. Analgesic effects of tramadol, tramadolgabapentin, and buprenorphine in an incisional model of pain in rats (<i>Rattus norvegicus</i>). <i>J Am Assoc Lab Anim Sci</i> 50 :192–197.	9/1/2011	2882
Atcha Z, Rourke C, Neo AHP, Goh CWH, Lim JSK, Aw CC, Browne ER, Pemberton DJ. 2010. Alternative method of oral dosing for rats. <i>J Am Assoc Lab Anim Sci</i> 49 :335–343.	11/1/2010	2874
Alworth LC, Hernandez SM, Divers SJ. 2011. Laboratory reptile surgery: principles and techniques. <i>J Am Assoc Lab Anim Sci</i> 50 :11–26.	7/1/2011	2851
Cray C, Rodriguez M, Zaia J, Altman NH. 2009. Effects of storage temperature and time on clinical biochemical parameters from rat serum. <i>J Am Assoc Lab Anim Sci</i> 48 :202–204.	9/1/2009	2631
Turner DE, Daugherty EK, Altier C, Maurer KJ. 2010. Efficacy and limitations of an ATP-based monitoring system. <i>J Am Assoc Lab Anim Sci</i> 49 :190–195.	9/1/2010	2328
Pritchett-Corning KR, Chang FT, Festing MFW. 2009. Breeding and housing laboratory rats and mice in the same room does not affect the growth or reproduction of either species. <i>J Am Assoc Lab Anim Sci</i> 48 :492–498.	3/1/2010	2291
Vento PJ, Swartz ME, Martin LBE, Daniels D. 2008. Food intake in laboratory rats provided standard and fenbendazole-supplemented diets. <i>J Am Assoc Lab Anim Sci</i> 47 :46–50.	6/12/2009	2280

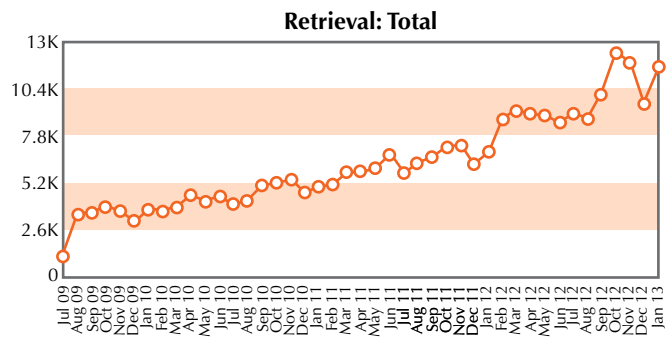


Figure 3. PubMed Central article retrieval history for the *Journal of the American Association for Laboratory Animal Science*.

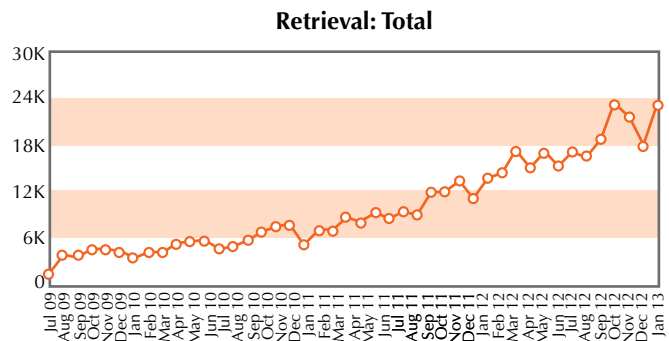


Figure 4. PubMed Central article retrieval history for *Comparative Medicine*.